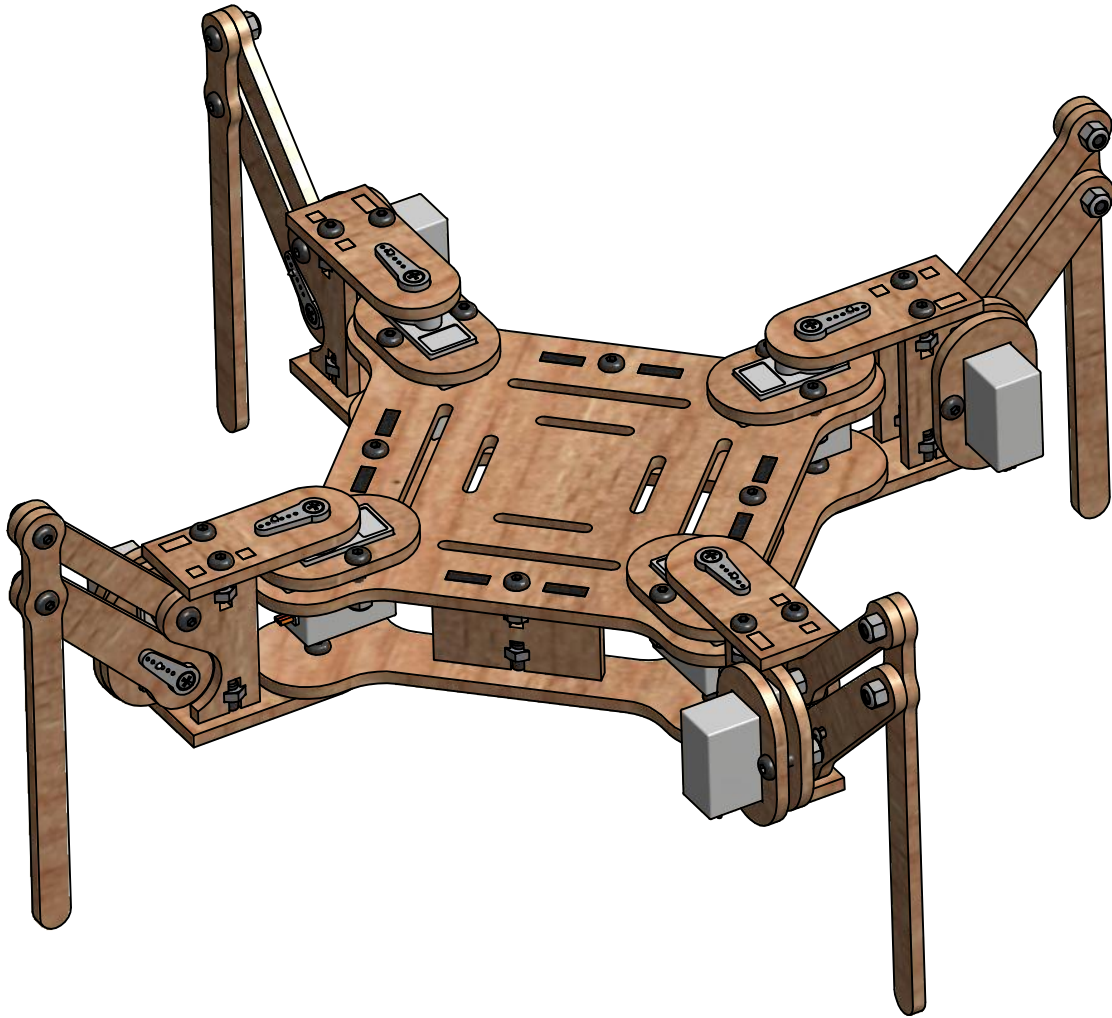


# mePed Assembly Manual




The mePed is a small, open source, quadruped robot designed by Scott Pierce of Spierce Technologies, LLC. This design is released under the Creative Commons, By Attribution, Share Alike License.

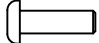
Please keep open source projects going for everyone!

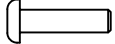
Hardware source files can be found at: [www.thingiverse.com/thing:756681](http://www.thingiverse.com/thing:756681)

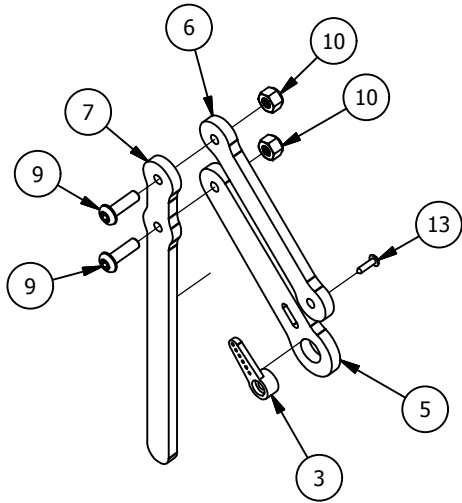
[www.spiercetechnology.com](http://www.spiercetechnology.com)

32ea - M3 Nyloc Nut 

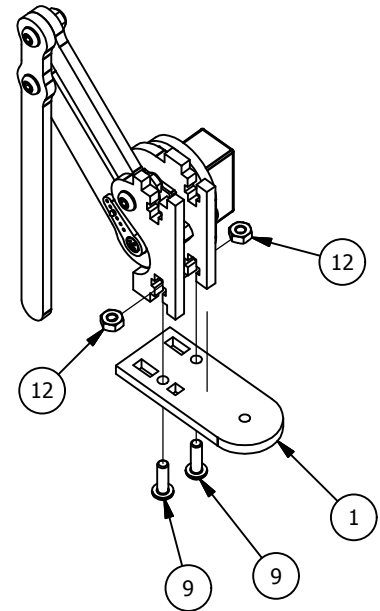
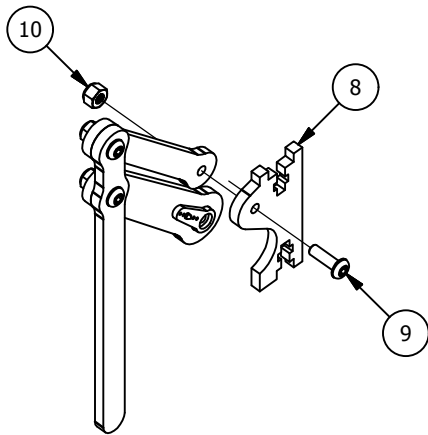
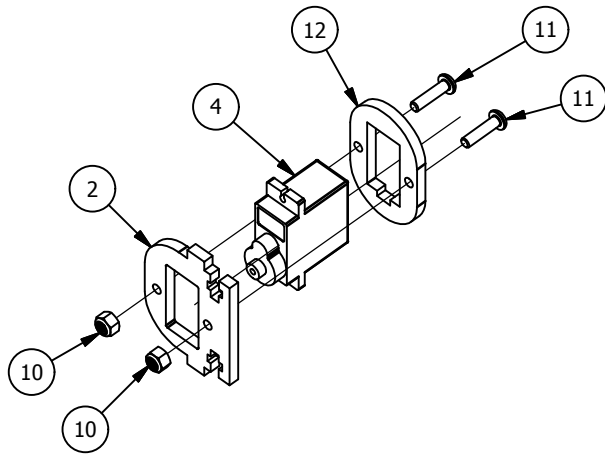
24ea - M3 Nut 

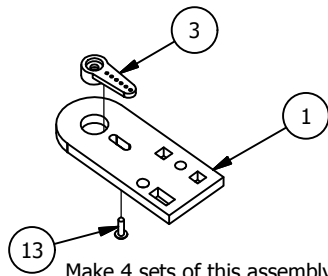
40ea - M3 x 10mm 

16ea - M3 x 12mm 



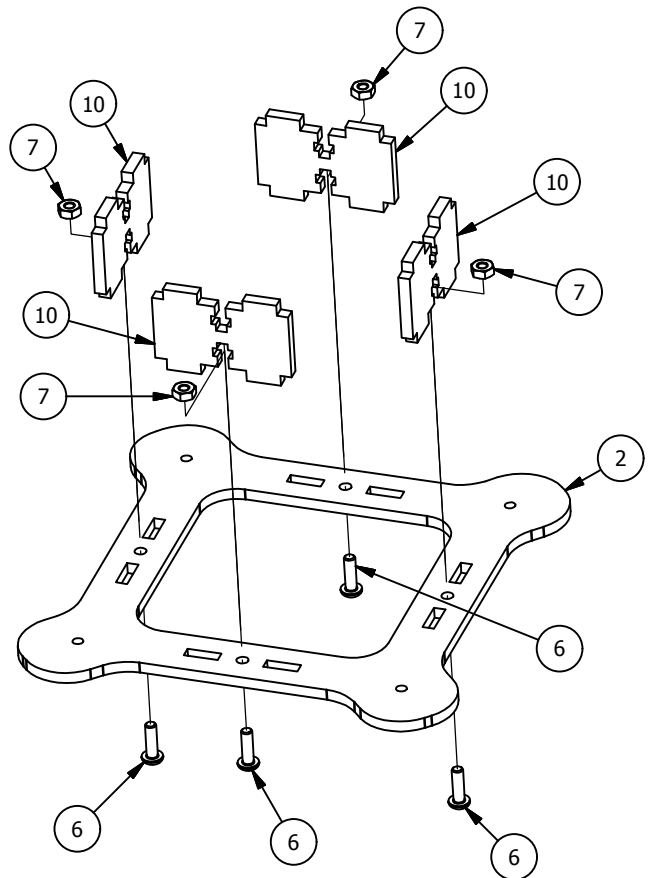
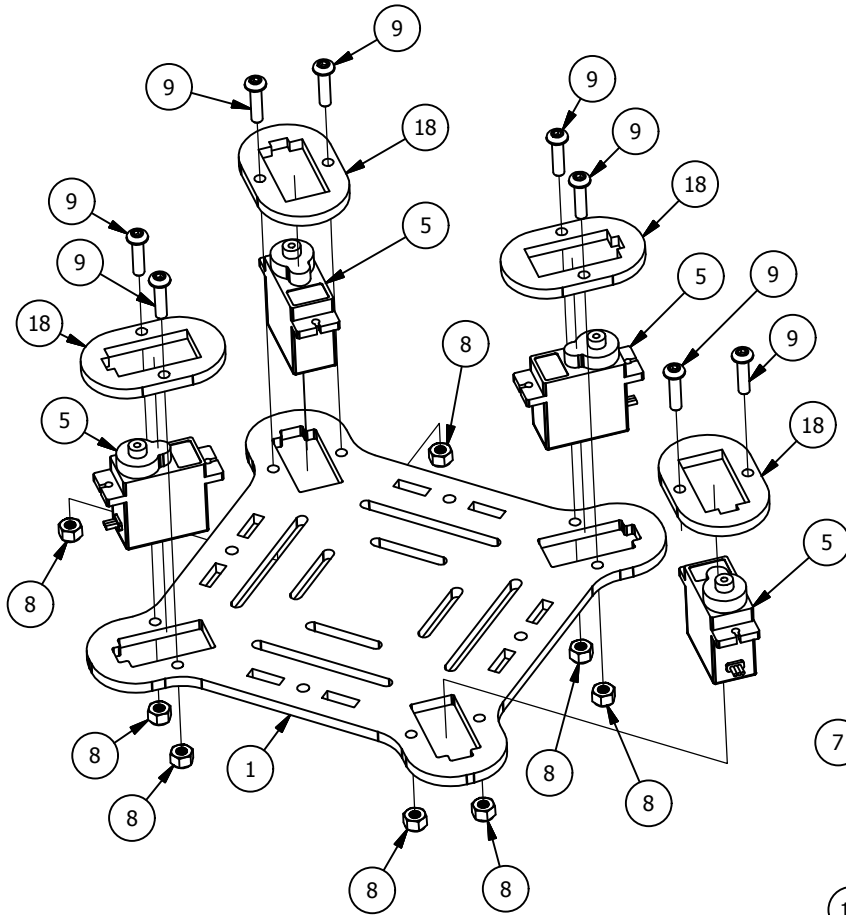
PARTS LIST		
ITEM	QTY	PART NUMBER
1	1	Leg Attachment Bottom Plate
2	1	Leg Servo Plate
3	2	Servo Single Arm
4	1	9 Gram Servo
5	1	Parallel Joint, Bottom
6	1	Parallel Joint, Top
10	5	Nut, M3 x 0.5, Nyloc
11	2	M3 x 12mm Screw
12	1	Servo Retainer
13	2	Servo Mount Screw





Make 4 sets of this assembly & set aside for a later step

PARTS LIST		
ITEM	QTY	PART NUMBER
1	1	Base
3	8	Servo Screw
5	8	9 Gram Servo
6	40	M3 x 10mm Screw
7	24	M3 Nut
8	32	Nut, M3 x 0.5, Nyloc
9	16	M3 x 12mm Screw
10	4	Body Spacer
13	4	Leg Servo Plate
18	8	Servo Retainer



PARTS LIST	
ITEM	PART NUMBER
3	Servo Screw
6	M3 x 10mm Screw
7	M3 Nut
8	Nut, M3 x 0.5, Nyloc

